

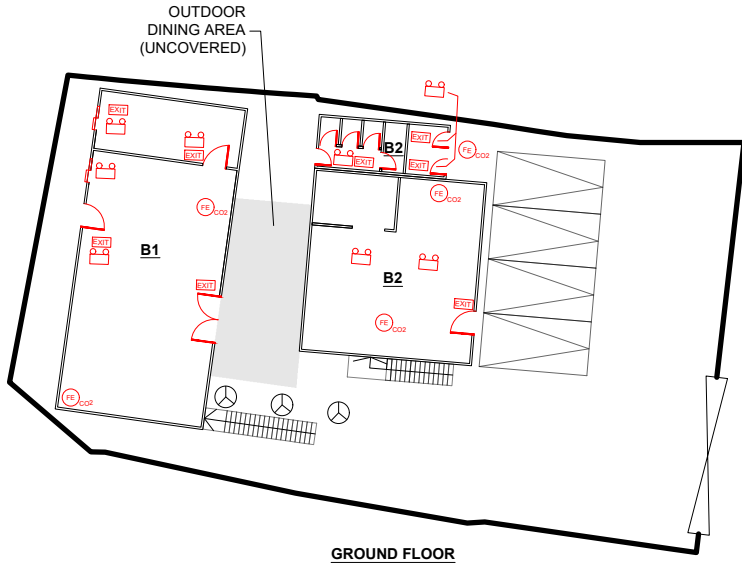
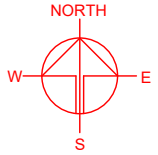
DEVELOPMENT PARAMETERS

| | | |
|-----------------------|-------------------------|---------|
| APPLICATION SITE AREA | : 574 m ² | (ABOUT) |
| COVERED AREA | : 189.75 m ² | (ABOUT) |
| UNCOVERED AREA | : 384.25 m ² | (ABOUT) |
| | | |
| PLOT RATIO | : 0.66 | (ABOUT) |
| SITE COVERAGE | : 33 % | (ABOUT) |
| | | |
| NO. OF STRUCTURE | : 2 | |
| DOMESTIC GFA | : NOT APPLICABLE | |
| NON-DOMESTIC GFA | : 379.5 m ² | (ABOUT) |
| TOTAL GFA | : 379.5 m ² | (ABOUT) |
| | | |
| BUILDING HEIGHT | : NOT EXCEEDING 7.5 m | |
| NO. OF STOREY | : 2 | |

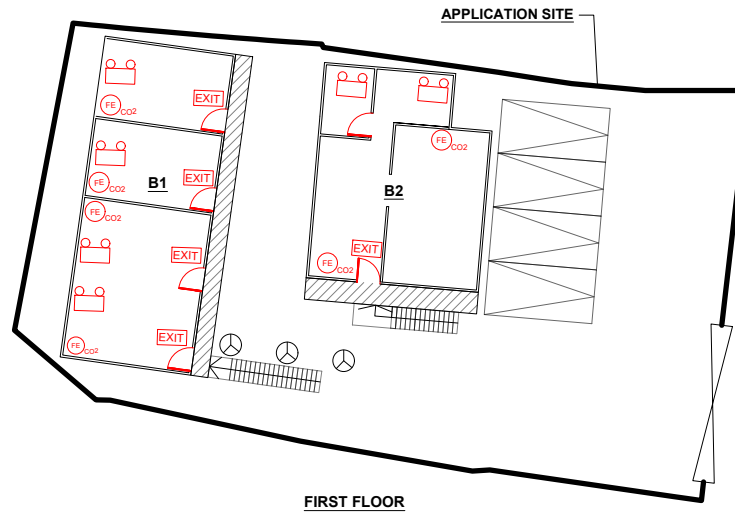
PARKING AND LOADING/UNLOADING PROVISION

| | |
|----------------------------|-----------------------|
| NO. OF PRIVATE CAR | : 4 |
| PARKING SPACE | : 4 |
| DIMENSION OF PARKING SPACE | : 5 m (L) X 2.5 m (W) |

| STRUCTURE | USE | COVERED AREA | GFA | BUILDING HEIGHT |
|-------------------|--|-------------------------------|------------------------------|--------------------------------|
| B1 (G/F) (1/F) | EATING PLACE SHOP AND SERVICES | 106.5 m ² (ABOUT) | 213m ² (ABOUT) | NOT EXCEEDING 7.5 m (2-STOREY) |
| B2 (G/F) (1/F) | SHOP AND SERVICES, WASHROOM SHOP AND SERVICES | 83.25 m ² (ABOUT) | 166.5 m ² (ABOUT) | NOT EXCEEDING 7.5 m (2-STOREY) |
| TOTAL | | 189.75 m ² (ABOUT) | 379.5 m ² (ABOUT) | |





GROUND FLOOR



FIRST FLOOR






FIRE SERVICE INSTALLATIONS

-  EXIT SIGN
-  EMERGENCY LIGHT
-  5 KG GAS-TYPE FIRE EXTINGUISHER

FS NOTES:

1. SUFFICIENT EMERGENCY LIGHTING SHALL BE PROVIDED THROUGHOUT THE ENTIRE BUILDING IN ACCORDANCE WITH BS5266-1:2016, BS EN1838:2013 AND FSD CIRCULAR LETTER NO.4/2021;
2. SUFFICIENT DIRECTIONAL AND EXIT SIGN SHALL BE PROVIDED IN ACCORDANCE WITH BS5266-1:2016 AND THE FSD CIRCULAR LETTER 5/2008.
3. PORTABLE HAND-OPERATED APPROVED APPLIANCE SHALL BE PROVIDED AS REQUIRED BY OCCUPANCY.
4. ACCESS IS PROVIDED FOR EMERGENCY VEHICLE TO REACH 30m OF ALL PART OF STRUCTURES.

LEGEND

-  APPLICATION SITE
-  STRUCTURE
-  PARKING SPACE
-  EXISTING TREE (WILL BE PRESERVED)
-  INGRESS / EGRESS

PLANNING CONSULTANT



PROJECT

TEMPORARY SHOP AND SERVICES AND EATING PLACE WITH ANCILLARY FACILITIES FOR A PERIOD OF 5 YEARS

SITE LOCATION

LOT 2905 S.C.RP (PART) IN D.D. 104 AND ADJOINING GOVERNMENT LAND, MAI PO, YUEN LONG, NEW TERRITORIES

SCALE

1 : 350 @ A4

DRAWN BY: MN DATE: 17.7.2024

CHECKED BY: DATE:

APPROVED BY: DATE:

DWG. TITLE: FSIs PROPOSAL

DWG NO.: APPENDIX I VER.: 001